

# AN APPLICATION FOR FAMILIARIZING ONESELF with places open to the public


## UNE SOLUTION SIMPLE ET INNOVANTE

**Blindsee** is innovating the way people access cultural, public, or private spaces, as well as points of interest and descriptions.

The application provides autonomy, particularly for people with disabilities, improving visibility and information for visitors. It allows them more freedom to explore at their own pace, based on their preferences or needs, without the need for an accompanying guide or prescribed route.

For spaces open to the public, the solution can be quickly and easily installed with complete independence.

The simplicity of setting up the solution, including tagging and descriptions, allows for advanced preparation and preconfiguration of spaces or exhibits. You can create and activate different levels or routes for users as needed, whether they are permanent, temporary, or theme-based,...

 The **Blindsee application** : an aid in obtaining the «Tourisme et Handicap » label.



### ✓ Open to everyone

Blindsee is universal and free for the user. There's no need for extra hardware, no additional cost, just a smartphone, and that's it. The solution is compatible with all establishments or spaces open to the public without the need for specific developments.

### ✓ Very low costs

The operating costs for the site are limited to a subscription fee. Only beacons need to be provided if they are not already installed.



# AN INCLUSIVE AUDIO GUIDE

## Developed with and for the visually impaired

Blindsee was developed in collaboration with an association focused on individuals with visual impairments, and the interface was designed and tailored with input from non-sighted and visually impaired users.

### ✓ Fast and intuitive navigation

The navigation is fast, simple, and efficient. All interactions can be performed without having to look at the screen. The user can, if desired, use the Talkback or VoiceOver screen reader function for an automatic screen reading experience.

### ✓ Compliance with the law

Legislation, since 2005, requires public establishments (ERP) to enable everyone, without distinction, to access, move around, and receive disseminated information. Blindsee helps you meet this requirement.

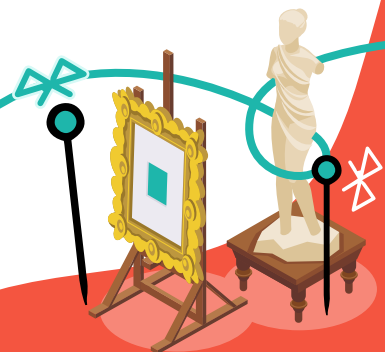
### ✓ Value creation

Blindsee enables visits by a broader audience, increasing the attendance at your site or exhibition while providing a higher level of service. It also presents an innovative image and a new communication channel.



### ✓ Suited for all locations

Whether you manage a public or private space, a permanent, temporary, or ephemeral exhibition, Blindsee is compatible with the configuration of the outdoor and indoor spaces of your establishment.





An application that enhance the accessibility of public spaces.

Suitable for various types of places, including museums, cultural and tourist spaces, as well as private and public locations.



[www.blindsee.io](http://www.blindsee.io)



# INCLUSIVE AUDIO DESCRIPTION

DEVELOPED WITH AND FOR  
THE VISUALLY IMPAIRED

Remove the barriers to access for places open to the public, so that they can benefit the widest audience

