



An application enhancing accessibility to  
your temporary exhibition.

Intended for any art gallery, art center, or  
temporary exhibition venue, whether  
private or public.



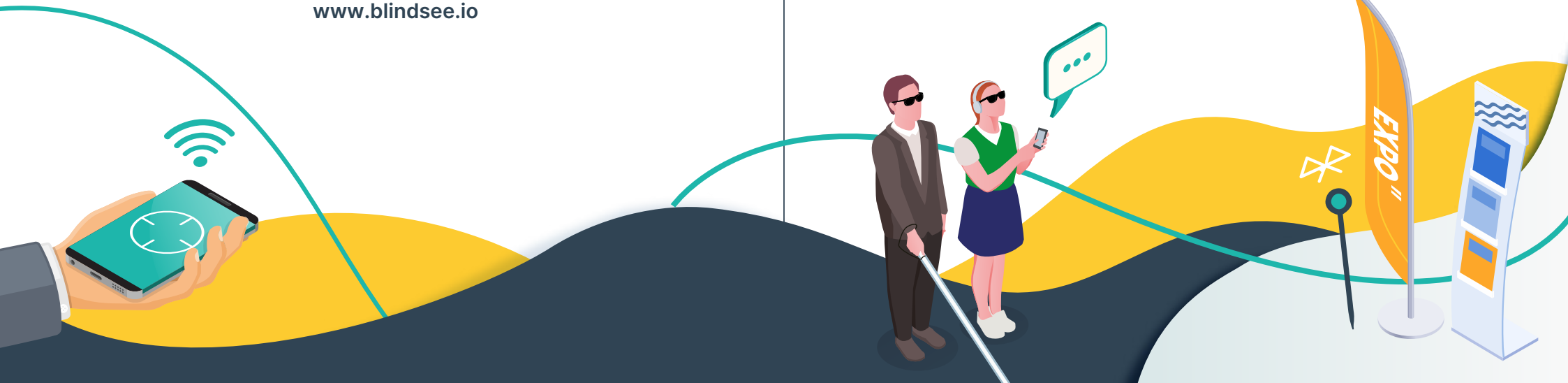
[www.blindsee.io](http://www.blindsee.io)



# INCLUSIVE AUDIO DESCRIPTION

DEVELOPED **WITH AND FOR**  
THE VISUALLY IMPAIRED

Remove access barriers to temporary  
exhibitions so that they benefit a  
wider audience



## AN APPLICATION TO OPTIMIZE the attendance of short-term exhibitions

### A SIMPLE AND INNOVATIVE SOLUTION

**Blindsee** innovates in providing access to temporary exhibitions, artworks, and their descriptions.

Whether it's an art gallery, an art center, or any temporary exhibition space, **Blindsee** enables exhibitions to be accessible to a wider audience quickly. It improves visibility and information for the visually impaired, giving them more freedom to explore at their own pace, based on their preferences or needs, without the requirement of an accompanying guide or predefined paths. For the exhibition venue, the solution can be easily and autonomously installed.

The simplicity of setting up the solution (tagging, descriptions) allows for advance preparation and configuration of spaces or exhibitions. You can create and activate different thematic levels or routes for visitors according to your preferences (e.g., Art Nouveau).

The **Blindsee** application : An aid for obtaining the "Tourisme et Handicap" label



#### ✓ Open to everyone

**Blindsee** is universal and free for the user. There's no need for additional equipment or costs; a smartphone with Android or iOS is all that's required. The solution is compatible with all types of establishments without the need for specific developments. It eliminates the need to invest in short-term solutions like label or e-reader systems.

#### ✓ Very low costs

Operating costs for the site are limited to a subscription fee. You may need to provide beacons if they are not already installed, but we can also supply them.



## AN INCLUSIVE AUDIO GUIDE Developed with and for the visually

**Blindsee** was developed in collaboration with an organization focused on individuals with visual impairments, and the interface was designed and tailored with input from blind and visually impaired users.

#### ✓ Fast and intuitive navigation

The navigation is quick, simple, and effective. All interactions can be performed without needing to look at the screen. If desired, users can utilize the voice assistant Talkback or VoiceOver (automatic screen reading function).

#### ✓ Ensuring compliance with the law

Legislation, since 2005, requires public establishments (ERP) to ensure that everyone, without distinction, can access, move around, and receive the information provided. **Blindsee** helps you meet this obligation.

#### ✓ Value creation

**Blindsee** enables visits from a wider audience, increasing attendance at your short-term exhibition with a higher level of service. It presents an innovative image and offers a quickly operational new communication channel.



#### ✓ Adapted to all locations

Whether you are a manager of a public or private space, a temporary or ephemeral exhibition, **Blindsee** is compatible with the configuration of the outdoor or indoor spaces in your establishment.

